



Artificial Intelligence

Alan Lee @TID Jan 2021

華實科技

AI & Block-chain Partnership:



Blockchain Eco-system:

Banks, HKMA, Ship Owners,
Charterers, Traders, Chambers, Inspection,
Insurer, Customs ...

Official Big Data Partner:



Featured Client References:



RISKSIS TECHNOLOGY

RISKSIS

- ✓ Big Data
- ✓ Artificial Intelligence
- ✓ Block-chain

Alan Lee

Email: alan.lee@risksis.com

Tel: +852 60516869

RISKSIS

Your Trusted Partner

AI Sharing on SME TID Seminar

Partner in Data Intelligence

Contents

➤ Strategy – Data-Lake	1
➤ Strategy – Business Intelligence	2
➤ Strategy – RPA	3
➤ Strategy – E-commerce	4
➤ Strategy – Business Analytics	5
➤ Strategy – Customer Analytics	6
➤ Strategy – Chat-bot AI	7
➤ Strategy – Document AI Classification	8
➤ Strategy – Voice AI Recognition	9
➤ Strategy – Image & Video Analytics	10
➤ Strategy – Energy Optimization	11
➤ Strategy – Robot Cleaning	

AI Sharing on SME TID Seminar

Partner in Data Intelligence

Contact

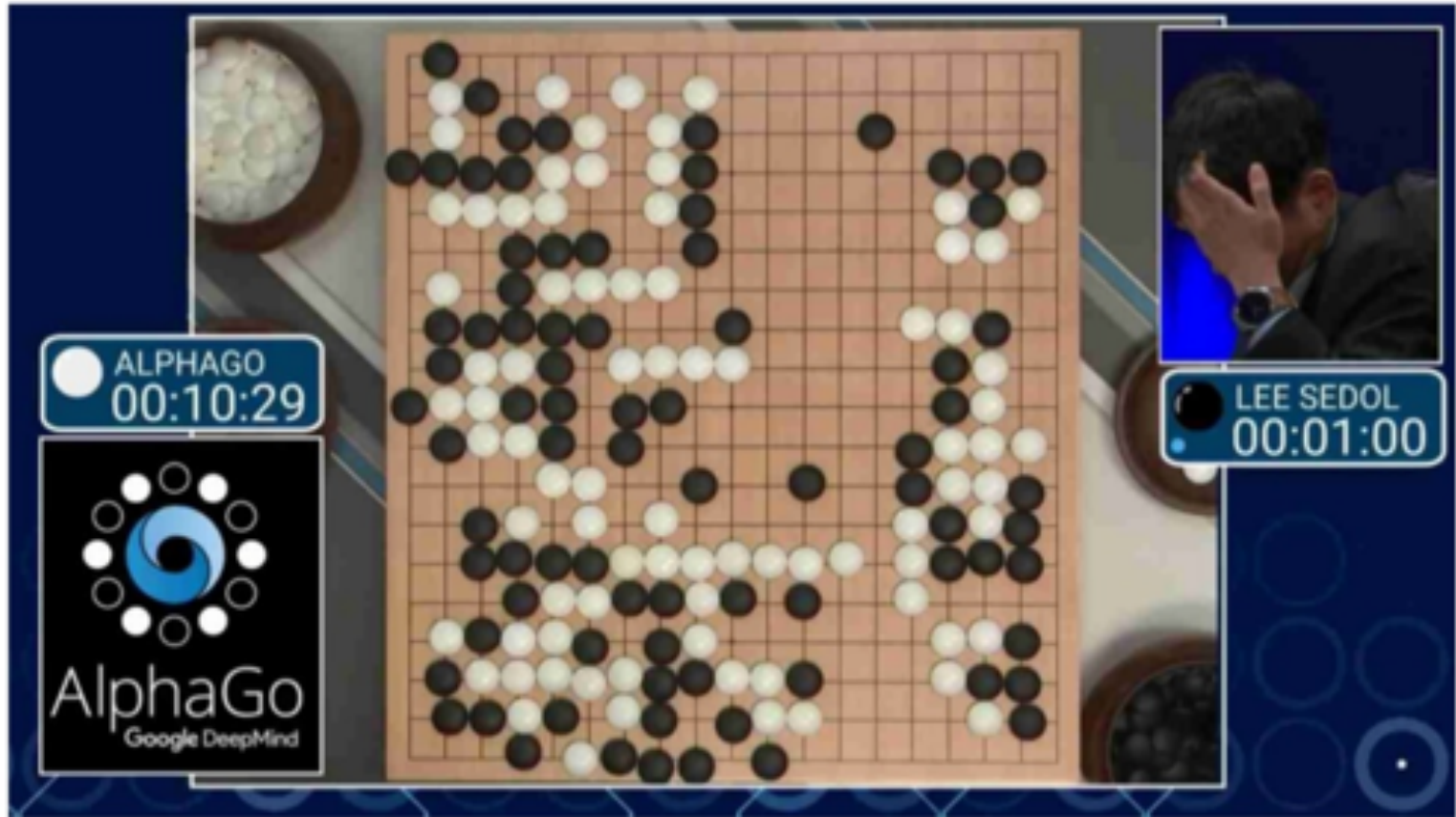
Alan Lee

Email: alan.lee@risksis.com

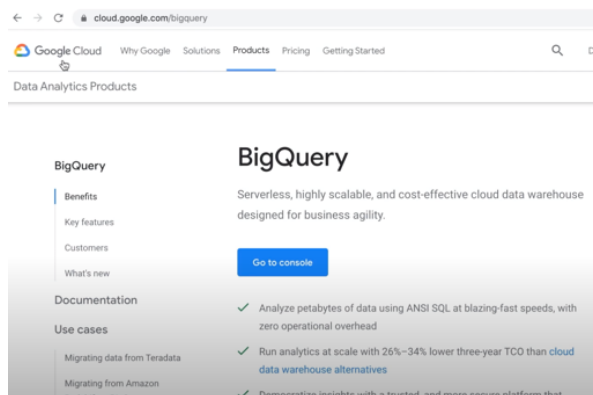
Tel: +852 60516869

Artificial Intelligence

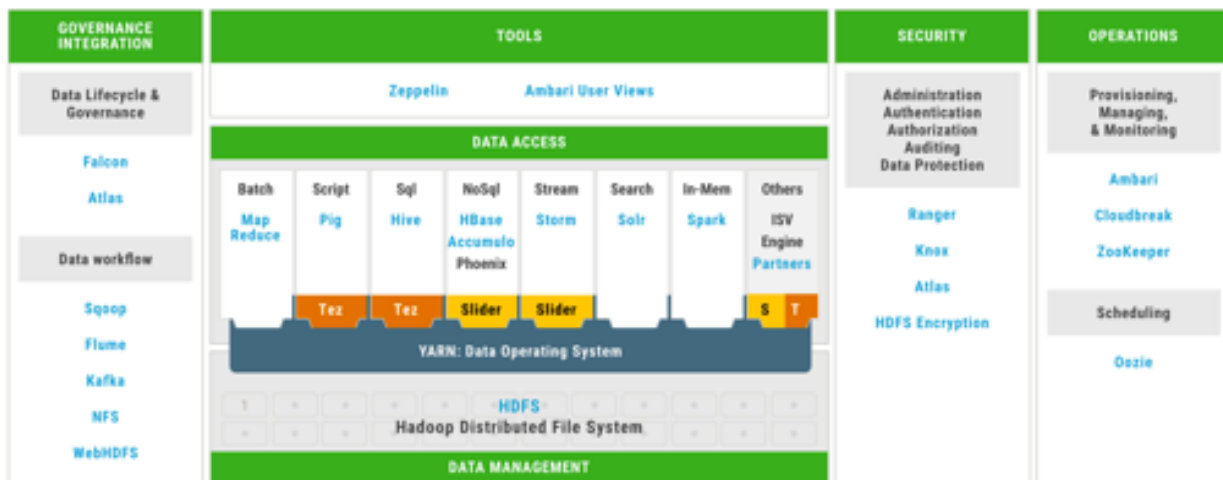
Example: Game of Go: Computer-Human 4:1



SME Strategy: Big Data Infrastructure Off-the-Shelf & On-Premise



Google Big Query



On-premise DataLake

Sharing Outline



- **Strategy – DataLake + BigQuery**
- **Strategy – Business Intelligence**
- **Strategy – RPA**
(UIPath, Script-based)
- **Strategy – E-commerce**
(Recommendation Engine)
- **Strategy – Business Analytics**
(Web/Google Analytics/Social Media)
- **Strategy – Customer Analytics**
(Marketing / CRM)
- **Strategy – Chatbot AI**
- **Strategy – Document AI Classification**
- **Strategy – Voice AI Recognition**
- **Strategy – Image / Video Analytics**
- **Strategy – Fever Detection / Mask Detection**
- **Strategy – Energy Optimization**
- **Strategy – Robot Cleaning**

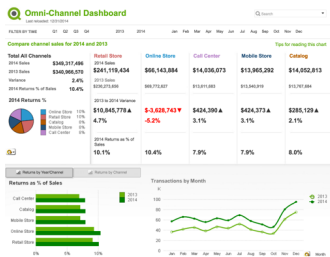
SME Strategy: Business Intelligence

Business Intelligence

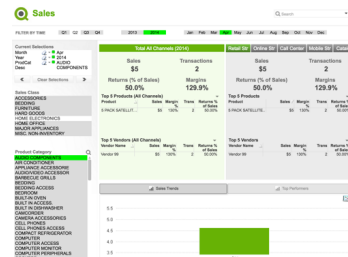


Sharing Outline

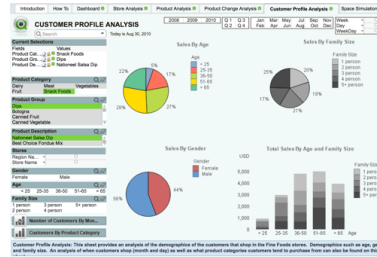
- Strategy – DataLake + BigQuery
- **Strategy – Business Intelligence**
- Strategy – RPA (UIPath, Script-based)
- Strategy – E-commerce (Recommendation Engine)
- Strategy – Business Analytics (Web/Google Analytics/Social Media)
- Strategy – Customer Analytics (Marketing / CRM)
- Strategy – Chatbot AI
- Strategy – Document AI Classification
- Strategy – Voice AI Recognition
- Strategy – Image / Video Analytics
- Strategy – Fever Detection / Mask Detection
- Strategy – Energy Optimization
- Strategy – Robot Cleaning



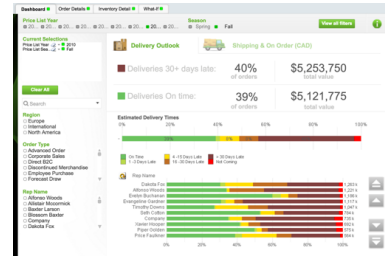
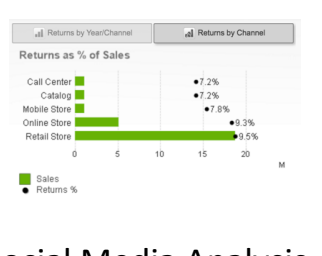
Omni-Channel Analysis



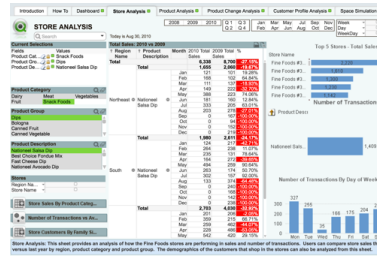
Sales Analysis



Customer Profile and Segmentation Analysis

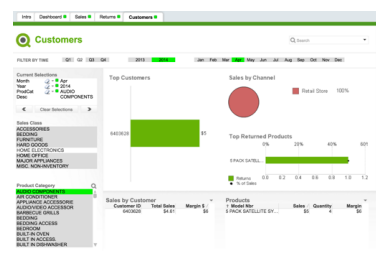


Order and Inventory

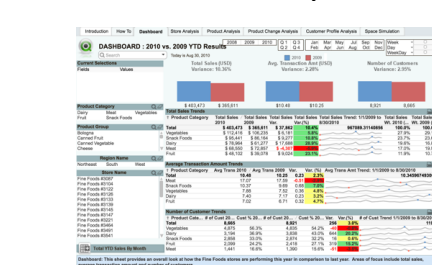


In-Store Analysis

Social Media Analysis



Customer Analysis



Product Performance Analysis

SME Strategy: Robotic Process Automation Off-the-Shelf & Script-Based



UI-Path, BluePrism, Anywhere, ...Script-based

Sharing Outline



- Strategy – DataLake + BigQuery
- Strategy – Business Intelligence
- **Strategy – RPA**
(UIPath, Script-based)
- Strategy – E-commerce
(Recommendation Engine)
- Strategy – Business Analytics
(Web/Google Analytics/Social Media)
- Strategy – Customer Analytics
(Marketing / CRM)
- Strategy – Chatbot AI
- Strategy – Document AI Classification
- Strategy – Voice AI Recognition
- Strategy – Image / Video Analytics
- Strategy – Fever Detection / Mask Detection
- Strategy – Energy Optimization
- Strategy – Robot Cleaning

SME Strategy: E-commerce AI Recommendation Engine

Concept of Recommendation



Our Platform

- Your end customers leave a great deal of useful data while they click and navigate through your E-commerce website.
- This Product recommendation platform helps you to harvest the data seamlessly and automatically, discover precious behavior and spending pattern, recommend the right products to the end customers using different strategies and show the products to the end customers using nicely-looking and customizable widget.

SME Strategy: E-commerce

AI Recommendation Engine



Concept of Recommendation

Product Recommendation Engine – 360 Customer View



Why?

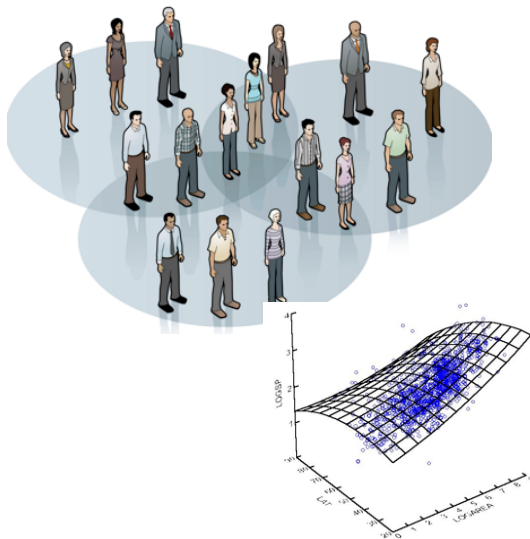
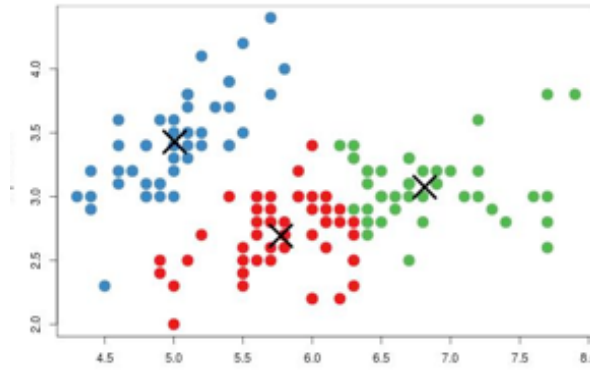
- 360 Customer View Strategy

- Event Data Collection Series
- Social Media (Facebook, Forum, Weibo, WeChat)
- Email Marketing and Response (Advanced Tracking and Enhanced Empowerment)
- Promotion Personalization Trends
- Offline Vs Online Integration Needs (Brick-and-mortar, Mobile Commerce, RFID, CS, POS, ...)
- Internet of Things Integration Needs (Sensors)

SME Strategy: Business Analytics

Email – Customer Analytics

Email Analytics



Sharing Outline



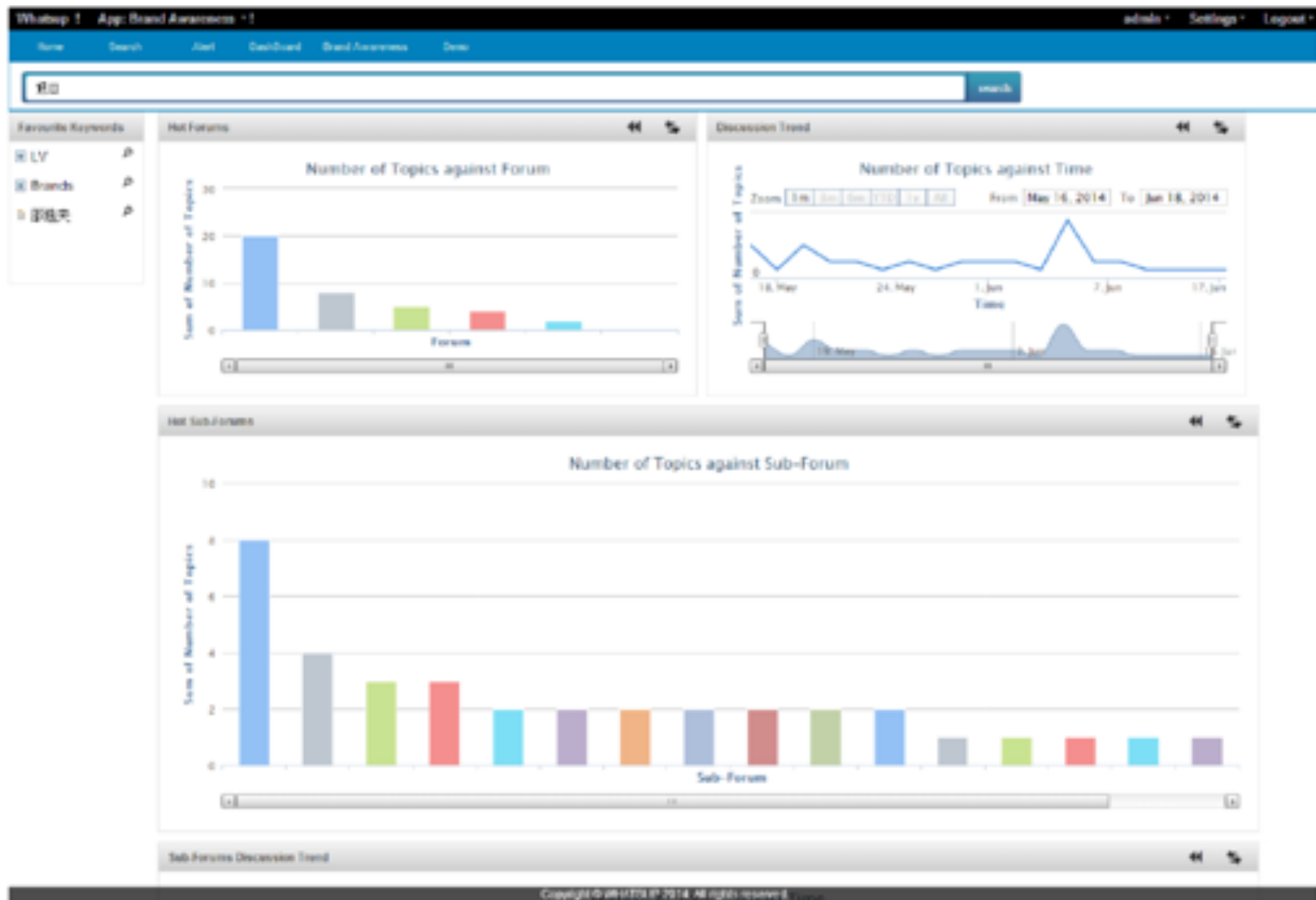
- Strategy – DataLake + BigQuery
- Strategy – Business Intelligence
- Strategy – RPA (UIPath, Script-based)
- Strategy – E-commerce (Recommendation Engine)
- Strategy – Business Analytics (Web/Google Analytics/Social Media)
- **Strategy – Customer Analytics (Marketing / CRM)**
- Strategy – Chatbot AI
- Strategy – Document AI Classification
- Strategy – Voice AI Recognition
- Strategy – Image / Video Analytics
- Strategy – Fever Detection / Mask Detection
- Strategy – Energy Optimization
- Strategy – Robot Cleaning

SME Strategy: Business Analytics

Social Media Market Data – Customer Analytics



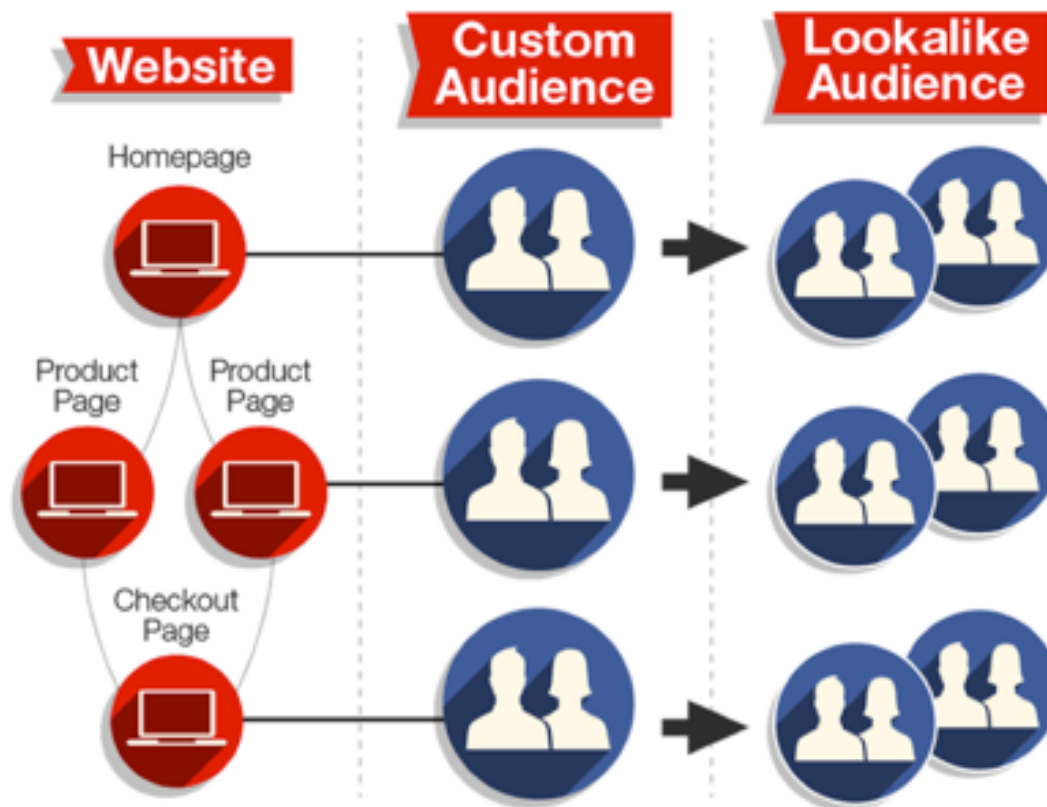
Forum & Social Media Crawling & Searching



SME Strategy: Business Analytics

Social Media – Customer Analytics

Social Media Data Collection + Analytics



Sharing Outline

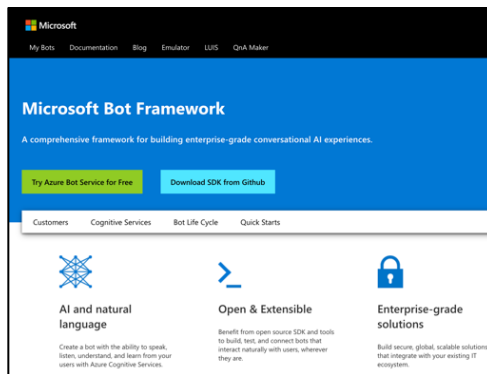


- Strategy – DataLake + BigQuery
- Strategy – Business Intelligence
- Strategy – RPA
(UIPath, Script-based)
- Strategy – E-commerce
(Recommendation Engine)
- **Strategy – Business Analytics**
(Web/Google Analytics/Social Media)
- Strategy – Customer Analytics
(Marketing / CRM)
- Strategy – Chatbot AI
- Strategy – Document AI Classification
- Strategy – Voice AI Recognition
- Strategy – Image / Video Analytics
- Strategy – Fever Detection / Mask Detection
- Strategy – Energy Optimization
- Strategy – Robot Cleaning

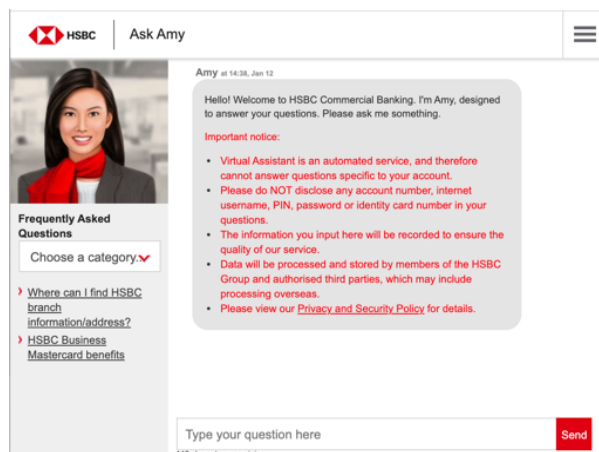
SME Strategy: Chatbot Virtual Assistant for Customer Service



AI Chatbot – Google DialogFlow



AI Chatbot – Microsoft Framework



Commercial Chatbot Examples

Sharing Outline



- Strategy – DataLake + BigQuery
- Strategy – Business Intelligence
- Strategy – RPA (UIPath, Script-based)
- Strategy – E-commerce (Recommendation Engine)
- Strategy – Business Analytics (Web/Google Analytics/Social Media)
- Strategy – Customer Analytics (Marketing / CRM)
- **Strategy – Chatbot AI**
- Strategy – Document AI Classification
- Strategy – Voice AI Recognition
- Strategy – Image / Video Analytics
- Strategy – Fever Detection / Mask Detection
- Strategy – Energy Optimization
- Strategy – Robot Cleaning

Textual AI – NLP Applications

OCR - Image Document to Textual Document AI – Image Technology

Information Retrieval

- Form Understanding

Data Extraction

- NLP Extraction from field

Option Recognition

- Image Pattern Recognition

MAERSK		MAERSK LINE RFC GHE092502HKS		BILL OF LANDING FOR PORT TO PORT SHIPMENT	
Shipper (Complete Name And Address) Shenzhen Ailisheng Trade Co., Ltd. Phoenix Road, Luohu district, Guangdong Shenzhen city, China Telephone and fax: 086-755-36922075		Packing List No.: 219618043-1		Bill of Lading No.: SSOF090406718	
Consignee (Complete Name And Address) Alejead Pc S.A.S - Aptdo Postal 28059 Carrera 100 5-39 - Cali - Valle - Colombia Telephone and email: 059-032-4491451 - alejead@hotmail.com		Freight And Charges Payable By: Shipper at shen zhen /Guangdong		Terms Of Sale: FOB (2010)	
Notify Party (Complete Name And Address) Same as consignee		Number of Original Bill of Lading Issued: Three (3)		Place and date of issue: 15 - August - 2010 Shen zhen / China	
Place of Receipt: Shen Zhen / China		Port Of Loading: Shanghai / China		For Release Of Shipment, Please Contact: Agencia de Aduanas Siacomex Ltda - Buenaventura Calle 2 No. 2°-58 - PBX: (052) 242 2798 Fax: (052) 242 4823 - buenaventura@siacomex.com	
Place of Delivery: Cali / Colombia		Port Of Discharge: Buenaventura / Colombia		Total No. Of Container/Package Received By The Carrier: 1 / 0	
For Transshipment To: Maersk Line		Vessel/Voyage: CSCL LE HAVRE / 0029W			
Marks And Numbers 20' steel Dry Cargo Container No: CSQU3054383	No. of PKGS 500 packages	Description of Packages And Goods 500 units of 15.6 inch laptop with core i7 8GB RAM, in 6 pallets with 80 packages each one with a volume of 1.63 M³ and 1 pallet with 20 packages with a volume of 0.41 M³	Gross Weight 1650 Kg	Measurement 10.2 M³	
<p>The above particulars are according to the declaration of the shipper. The carrier received the above goods in apparent good order and condition, unless otherwise specified, for carriage to the place as agreed above subject to the terms of this Bill of Lading including those on the back pages. If required by the Carrier, one original of this Bill of Lading must be surrendered duly endorsed in exchange for the goods or delivery order. In witness whereof original Bill of Lading has been signed in the number stated below, one of which being accomplished the other(s) to be void.</p> <p>IN ACCEPTING THIS BILL OF LANDING, the Shipper, Consignee, Holder hereof, and Owner of the goods, agree to be bound by all of its stipulations, exceptions and conditions, whether written, printed or stamped on the front or back hereof, as well as the provisions above Carrier's published Tariff Rules and Regulations.</p>					
Ocean freight		Prepaid USD 3,300	Collect	Shipped on Board: 20 - August - 2010 Place: Shanghai	
In Witness Whereof		3 original Bills of Lading have been signed, not otherwise stated above, one of which being accomplished the others shall be void		Signature: _____ B/No: SSOF090406718 Terms of landing continued on reverse side	

The contract evidenced by Bill of Lading is governed by the laws of the Hong Kong Special Administrative Region. Any proceeding against the carrier must be brought in the courts of the Hong Kong Special Administrative Region and no other court.

SME Strategy: Document AI

Document Text – Sentiment Analysis

Sentiment Analysis for selling



天猫国际 资生堂集团海外旗舰店

清洁控油 去黑头

发膜界治愈系红宝瓶

资生堂Fino浸透美容液发膜护发素230gX3护理改善毛躁 日本进口 官方直售

价格 ¥324.00 促销价 ¥189.00

月销量 200+ 累计评价 43381

立即购买 加入购物车

商品详情 累计评价 63381 服务详情

与描述相符 4.9

用后效果明显(1588) 正品(81) 清洗效果好(30) 一点也不油腻(26)

不打结(13) 用后效果差(56)

全部 追评 (555) 图片 (3376)

好用，会一直支持你的

01.09 综合套餐：230g 低***我 (匿名) 普通会员

初次评价： 此用户没有填写评论!

收货54天后追加： 好用，实惠

01.02 综合套餐：230g t***6 (匿名)

初次评价： 此用户没有填写评论!

收货138天后追加： 真的好用，无限回购

01.02 综合套餐：230g 图***1 (匿名) 普通会员

之前买过一次，太好用了！囤货囤货

01.02 综合套餐：230g t***9 (匿名)

初次评价： 此用户没有填写评论!

Big Data Search Engine for Time Trends



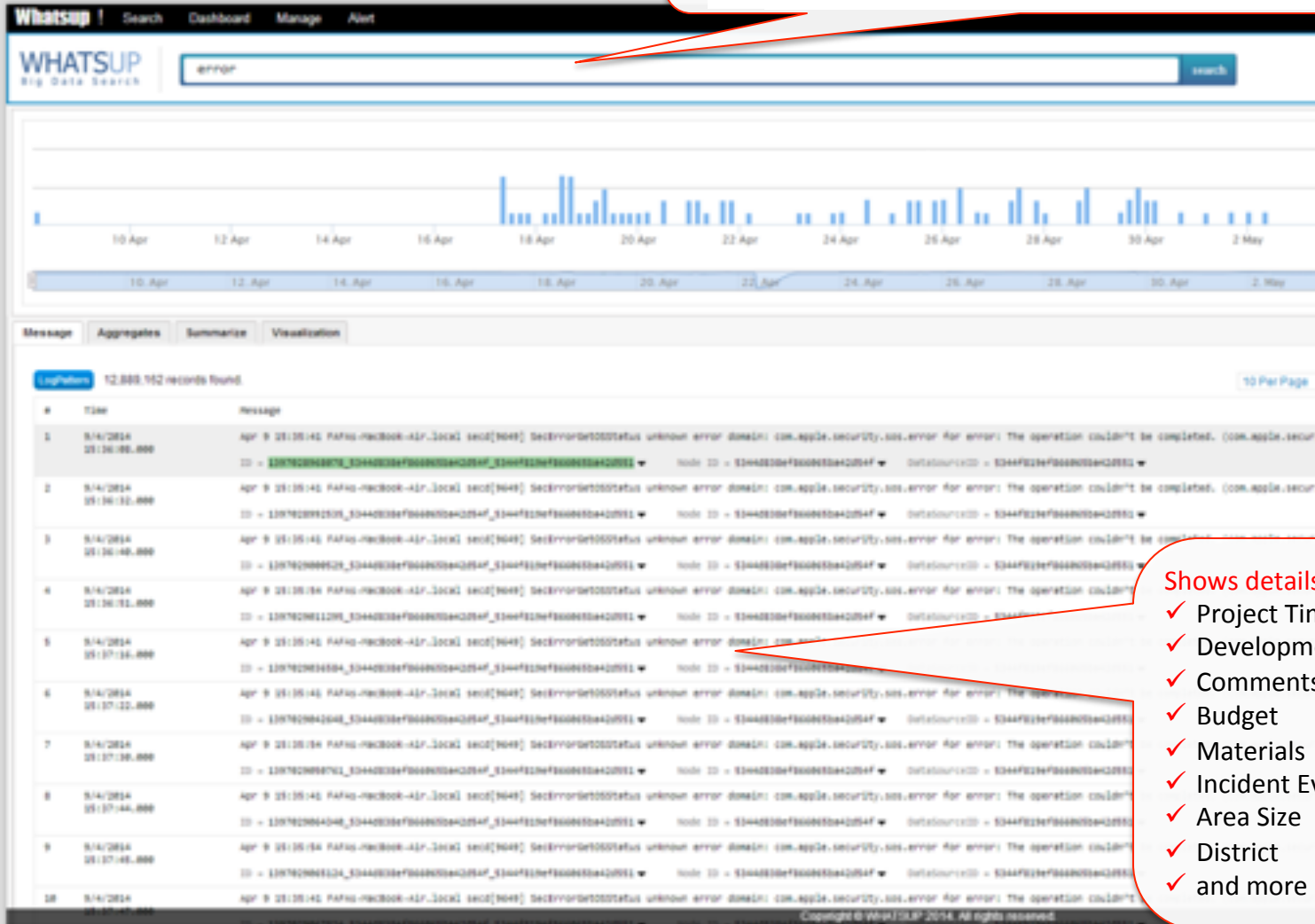
Search by typing:

Hotel

Show trends related to the keywords

Shows details such as

- ✓ Project Time
- ✓ Development Parameters
- ✓ Comments
- ✓ Budget
- ✓ Materials
- ✓ Incident Event Type
- ✓ Area Size
- ✓ District
- ✓ and more ...



SME Strategy: Speech Recognition AI

Voice-to-Text AI



Google Off-the-shelf API

實際運用 Speech-to-Text

Input type
☐ Microphone ☒ File upload


Language
English (United States) ▼

Speaker diarization BETA
Off ▼

Speakers
1 speaker ▼

Punctuation
☒

Show JSON ▼

 CHOOSE FILE

<https://cloud.google.com/speech-to-text>

SME Strategy: Video Analytics AI

Object Recognition



Image Object Recognition for warehouse



Image Object Recognition on the street

Sharing Outline

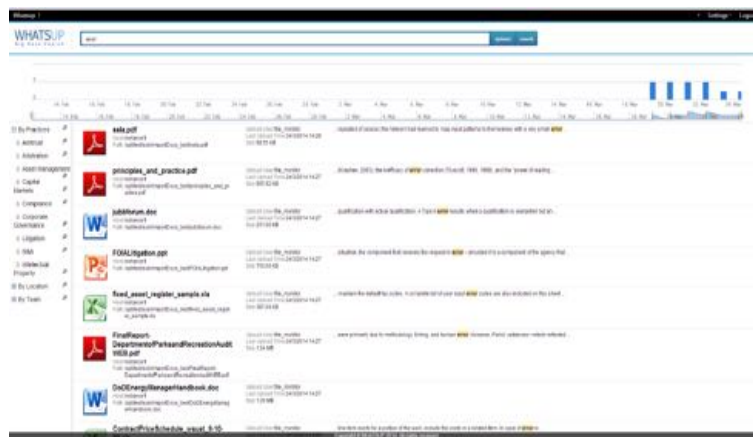
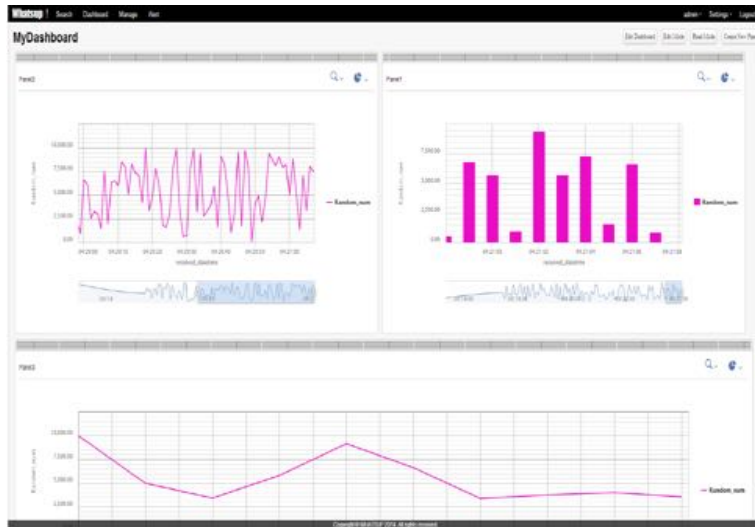


- Strategy – DataLake + BigQuery
- Strategy – Business Intelligence
- Strategy – RPA
(UIPath, Script-based)
- Strategy – E-commerce
(Recommendation Engine)
- Strategy – Business Analytics
(Web/Google Analytics/Social Media)
- Strategy – Customer Analytics
(Marketing / CRM)
- Strategy – Chatbot AI
- Strategy – Document AI Classification
- Strategy – Voice AI Recognition
- **Strategy – Image / Video Analytics**
- Strategy – Fever Detection / Mask Detection
- Strategy – Energy Optimization
- Strategy – Robot Cleaning

SME Strategy: System Fault Prediction

Time Series Analysis

Predictive Maintenance



High Speed Big Data Document Text Searching

Sharing Outline



- Strategy – DataLake + BigQuery
- Strategy – Business Intelligence
- Strategy – RPA
(UIPath, Script-based)
- Strategy – E-commerce
(Recommendation Engine)
- Strategy – Business Analytics
(Web/Google Analytics/Social Media)
- Strategy – Customer Analytics
(Marketing / CRM)
- Strategy – Chatbot AI
- Strategy – Document AI Classification
- Strategy – Voice AI Recognition
- Strategy – Image / Video Analytics
- Strategy – Fever Detection / Mask Detection
- **Strategy – Energy Optimization**

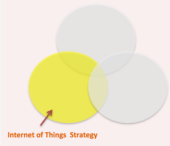
SME Strategy: Robot

Robot Facility Inspection, Fever Detection

Robot Automation



Sharing Outline



- Strategy – DataLake + BigQuery
- Strategy – Business Intelligence
- Strategy – RPA
(UIPath, Script-based)
- Strategy – E-commerce
(Recommendation Engine)
- Strategy – Business Analytics
(Web/Google Analytics/Social Media)
- Strategy – Customer Analytics
(Marketing / CRM)
- Strategy – Chatbot AI
- Strategy – Document AI Classification
- Strategy – Voice AI Recognition
- Strategy – Image / Video Analytics
- Strategy – Fever Detection / Mask Detection
- Strategy – Energy Optimization
- **Strategy – Robot Automation**

AI Sharing on SME TID Seminar

Partner in Data Intelligence

Q&A

Alan Lee

Email: alan.lee@risksis.com

Tel: +852 60516869

A scenic view of the Golden Gate Bridge in San Francisco during sunset. The bridge's red-orange towers and suspension cables are prominent on the left, extending towards the right. A large cargo ship with a white hull and a deck loaded with colorful shipping containers is sailing on the water below the bridge. The sky is filled with soft, colorful clouds in shades of orange, yellow, and blue, with the sun low on the horizon. The water reflects the warm light of the sunset.

THANK YOU

RISKSIS